

# WELCOME



Version 1.0

## My Details

**USER**.....

**PIN**.....

## Support



[support@steeldrive.org](mailto:support@steeldrive.org)



[www.steeldrive.org/support](http://www.steeldrive.org/support)

powered by



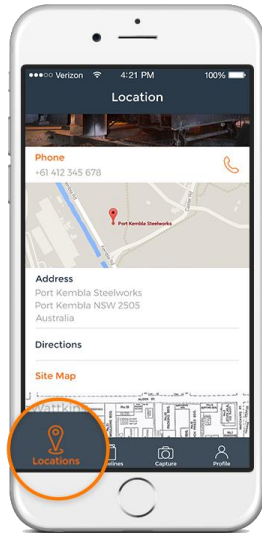
sponsored by



## Site Location Details



Find important information on site locations

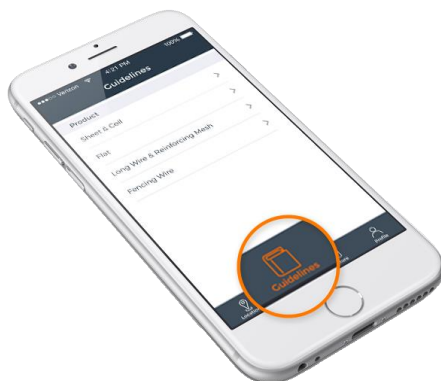


A single place to find information on site locations. Details include; Site name & location, main phone number, address, map, opening hours, special instructions, closest weight station, petrol station & rest stop and a list of facilities available. Each site will also have photo galleries to show a sitemap, PPE requirements, exclusion zones, height restrictions and general location images. You will be able to favourite site locations to receive notifications straight to your device, never be out of the loop again!

## Load Restraint Guidelines



Access the Load Restraint Guideline catalogue



Right at your fingertips you'll have access to the entire Load Restraint Guidelines catalogue. Updates to guidelines will be pushed directly to your device to ensure you always have access to the latest versions. See what matters first and foremost as the chain calculation table is brought front and centre. The full PDF of the guideline can be viewed and each guideline also has the ability to view a video instruction of the chain application for the specific product.

# Photo Capture



Check your applied load restraints and capture them

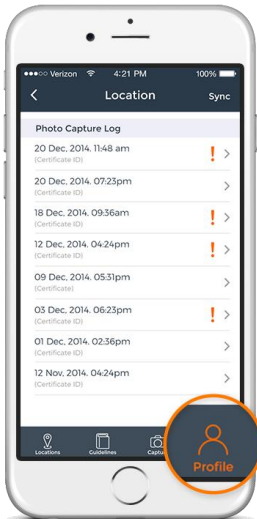


Protect yourself, your industry and all stakeholders in the transportation of steel. By capturing a record of the restraints applied the app is facilitating a self-check audit of the load before departure. The photos are associated with the guideline used and the place of pick-up creating a personal record for users and their companies. These details are then available for the next 30 days.

# Driver Profile



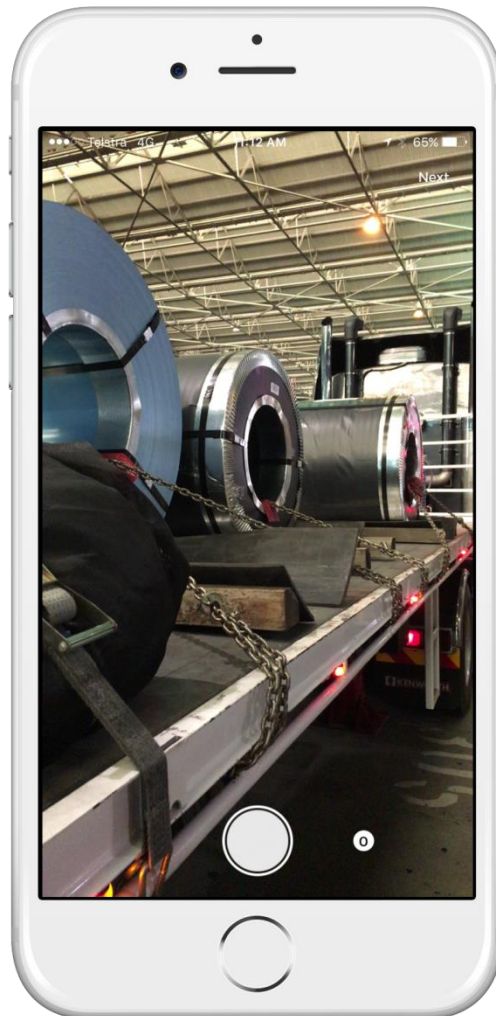
View a history of your load restraints



Each user will have a personal log-in to the mobile application. Here details can be managed to assist in operation of the application by modifying user contact details and capturing regularly used vehicle registrations. Users can also view their available photo capture logs.

## Proper Photo Capture Process

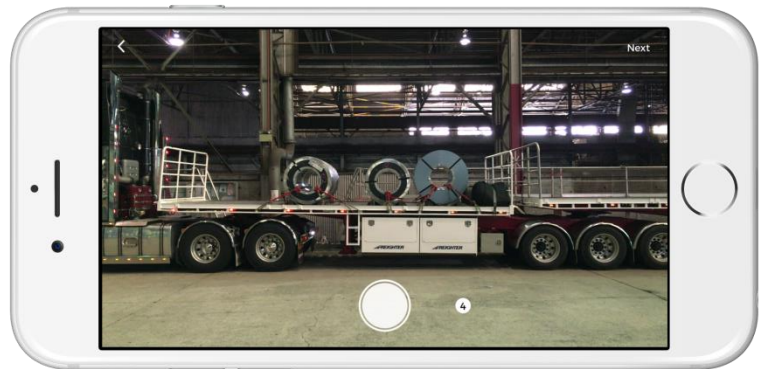
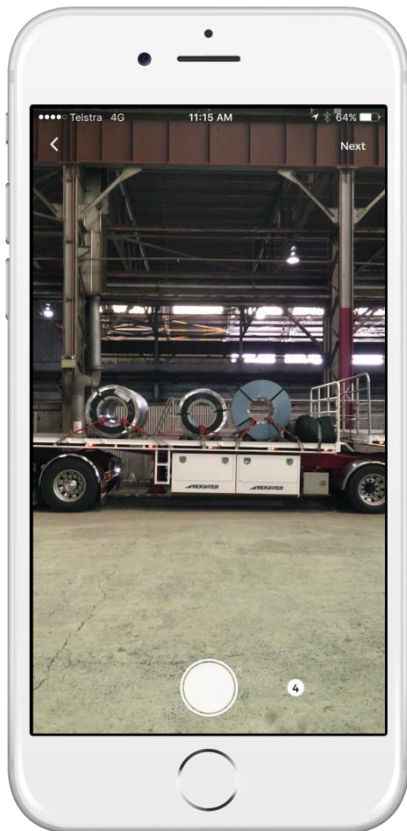
**! ALWAYS CHECK YOUR SURROUNDINGS**



- tight and bright
- within **arm's reach** of vehicle
- multiple products in shot

## Improper Photo Capture Process

**! STAY WITHIN ARM'S REACH OF VEHICLE**



- out of driver safety zone
- in harm's way
- little detail captured



# SteelDrive Location Banner



Locations with this banner are on board

The banner is a vertical rectangle with a green top bar containing the text "AVAILABLE HERE". Below this is a grey textured area with the SteelDrive logo (a stylized 'S' with a blue and orange diagonal bar) and the text "SteelDrive". The next section is an orange bar with the text "FEATURES". Below this are five rows, each with a smartphone icon on the left and a feature description on the right, accompanied by a circular icon. The features are: "Site Location Details" (Find important information on site locations, info icon), "Load Restraint Guidelines" (Access the Load Restraint Guideline catalogue, list icon), "Photo Capture" (Check your applied load restraints and capture them, camera icon), and "Driver Profile" (View a history of your load restraints, person icon). The bottom section is white with the text "powered by buzinga APP DEVELOPMENT". Below this is a grey textured area with the text "www.steeldrive.org" and "info@steeldrive.org". The final section is white with the BlueScope logo and the text "Printed on Tyvek by BlueScope Engineering Records".

**! PHOTO CAPTURE CAN BE USED AT THESE SITES**

# Photo Capture Data Usage



	Photos/log	MB/log	Logs/day	MB/day	MB/month
Max	8	5.2	5	26	520
Avg	4	2.6	3	7.8	156
Min	2	1.3	2	2.6	52

\*Month total based on 20 days

MB = megabytes

## Other usage

- Viewing Load Restraint Guideline PDF will cache it to the device
- Load Restraint Guideline videos are streamed to the device

## Notes



.....

.....

.....

.....

.....

.....

.....

.....

.....